

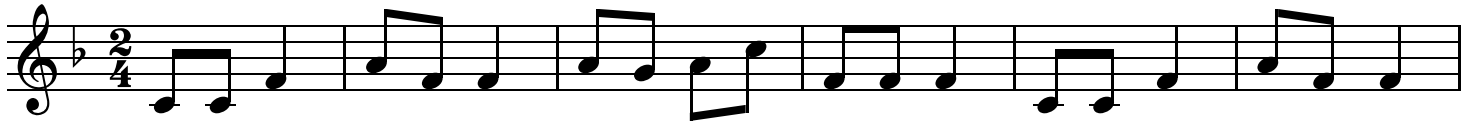
# Suān Méi Tāng

The Plum Drink

Transcribed by K. Friesen Wiens

Traditional Chinese  
Nursery Rhyme  
Music by Prof. Xu Hong Shuai

♩=120



Qǐn nǐ hē, nǐ lái hē, qīn sī méi guì gé de duō. Qǐn nǐ cháng, nǐ lái cháng,

7



qīn sī méi guì jiā bái táng. Hé yì wǎn, lái yì - wǎn, liǎn wǎn yí kuāi qián - luó.